



QVIZ

Query and context based visualization of time-spatial cultural dynamics

Co-financed by the European Union, FP6 through the
IST-programme

Fredrik Palm

HUMlab, Umeå University



Partners

- Umeå University, Sweden
- Salzburg Research Forschungsgesellschaft mbH, Austria
- Regio Ltd, Estonia
- University of Portsmouth, Great Britain
- State Archives of Sweden
- National Archives of Estonia
- Telefónica I+D, Spain



Motivation, problem area

- The internet usage of digitalized archive resources has increased and that has led to a decreasing number of visitors in the reading rooms of the archives.
- The organization and presentation of digital archival information are still complex and restrict easy access to the archival documents.
- User to user brokerage functionality is missing in archival portals which leaves the researchers alone with their findings when using online archival documents.



Research Objectives

The map as an entry point to the archives

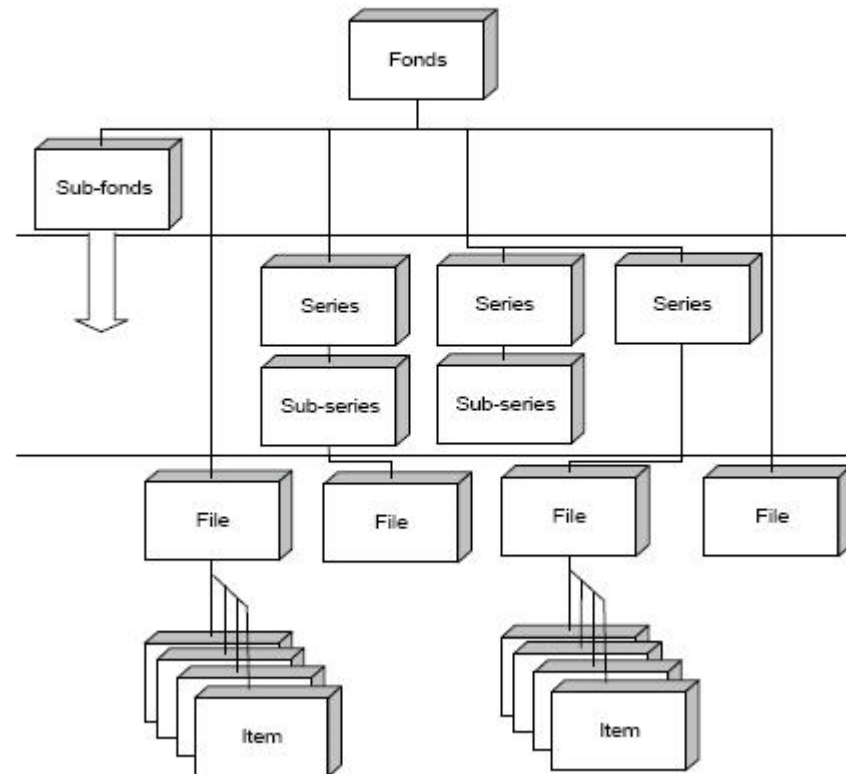
- Archival material are often systemized after time, space and administrative context. This means that if QVIZ can define the administrative units changes over time then we can visualize and search archival documents from a time-spatial dynamic map.
- This approach is generic and adaptive and could provide a single access point to all european archival resources.

Knowledge exchange and collaboration

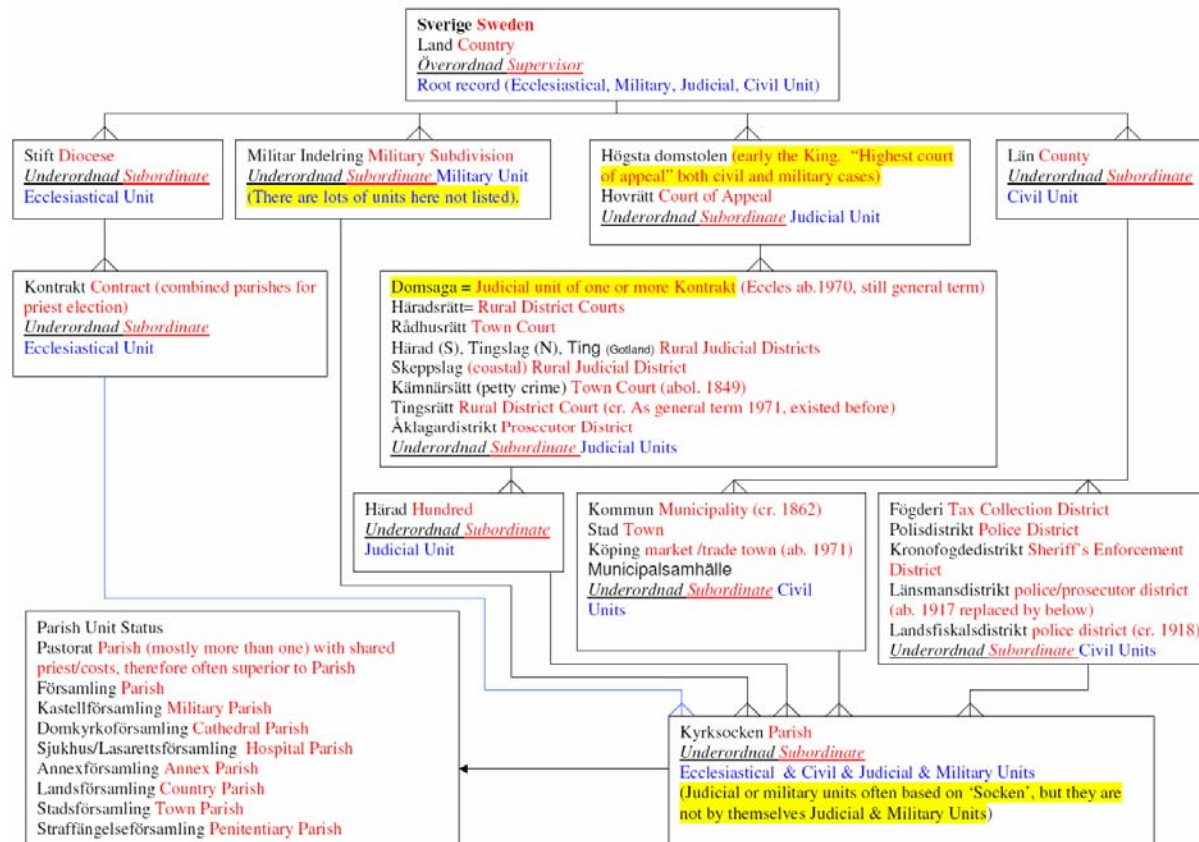
- The QVIZ project supports so called communities of practice (CoP) that uses archival information from the internet
- The knowledge created is being re-used in QVIZ search mechanisms and contextualization of archival resources.
- Through CoP:s the users can exchange knowledge, refer/link to archival documents and consult professional archive users amongst other things
- The users activities generates concepts in the QVIZ system that can be related to each other and these concepts becomes a growing network of knowledge.

Archival principle of provenance

Model of the levels of arrangement of a fonds

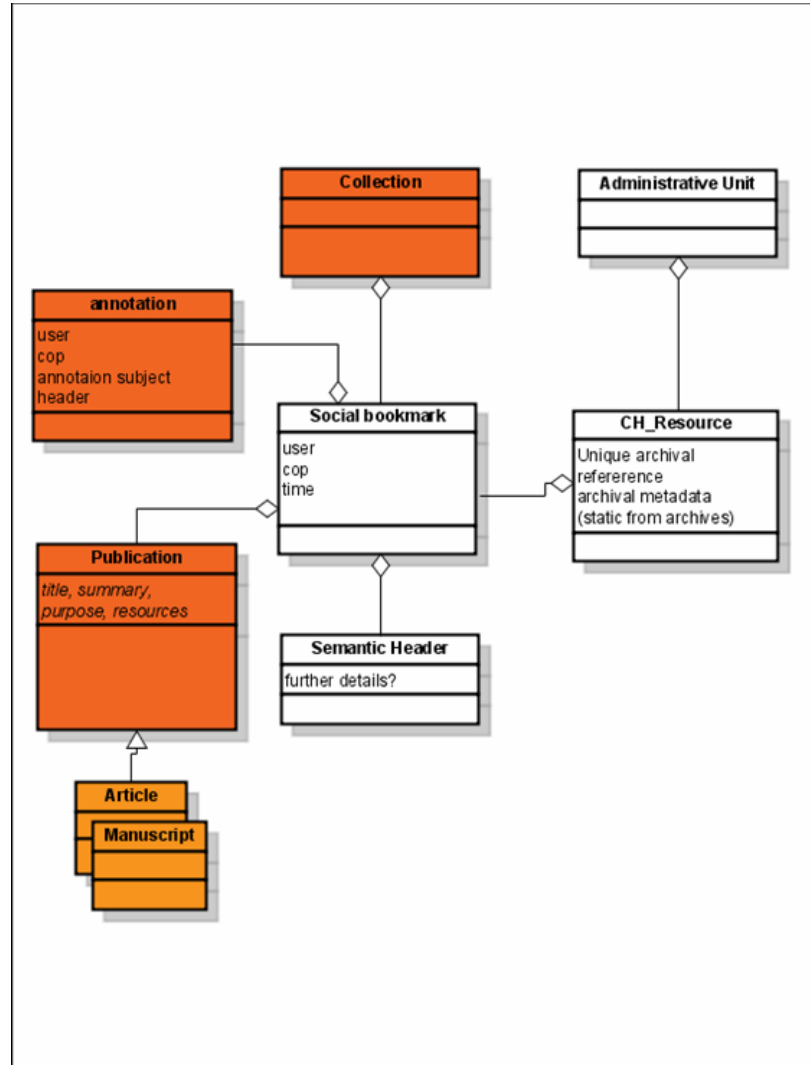


Administrative units as authority access



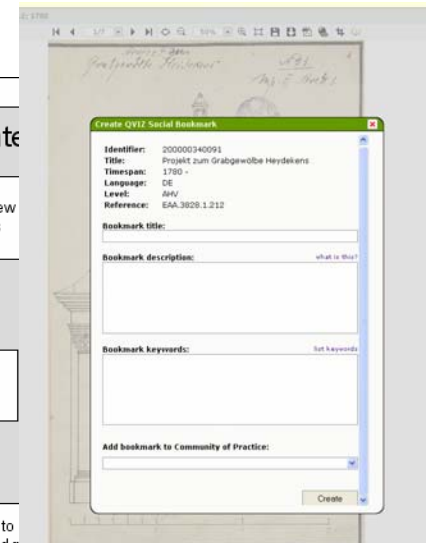
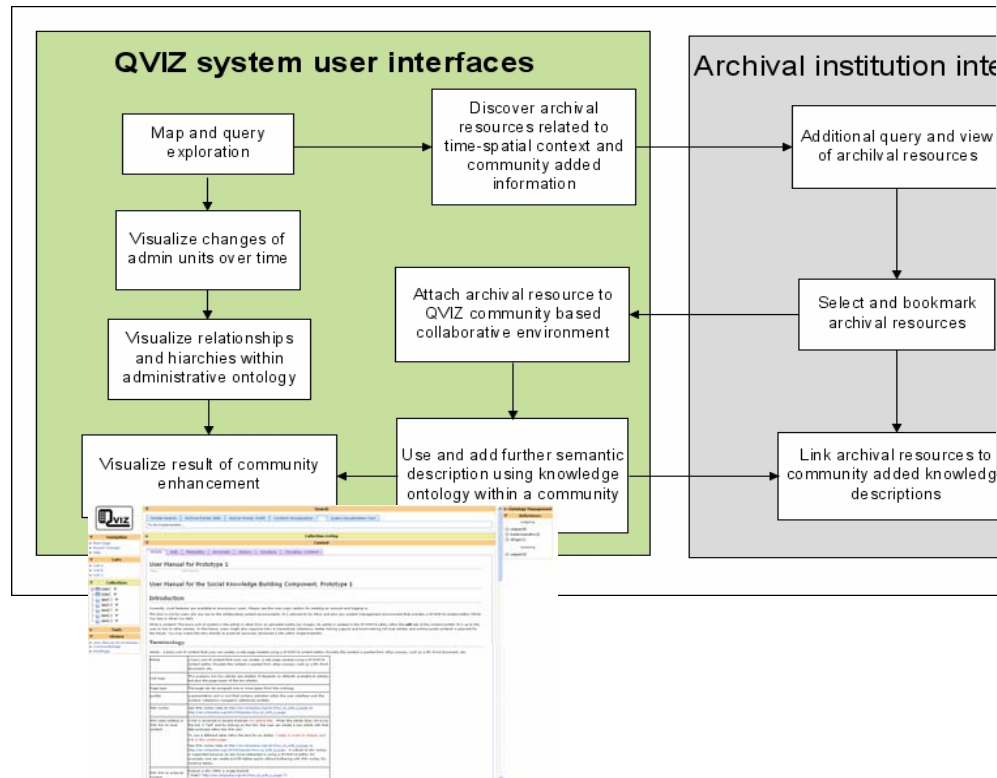


Archival documents and user content





Overview of user activities





Major Outcomes/Results

add or remove facets by clicking on facet names; swap facets by clicking on « and » symbols | documentation

Inactive Facets:

Active Facets:

maakond	kihelkond	mõis	year
Pärnu (5)	Polva (66)	Jaanimoisa (1)	1881 (1)
Voru (66)		Kähri (6)	1871 (1)
		Tilsi (9)	1861 (1)
		Timo (8)	1851 (1)
		Tõdu (9)	1841 (1)

Use map as filter

Time control: 1650 1700 1750 1800 1850 1900 2000 2033
1693 1746

Animate changes:
 Skip silence (show years with content only)
 Show with interval (years)
 Skip intermediate (show only selected start and end)

Legend...

[494: Contextual Data]
[AU attribute data fields]

[494: Result List]

- 2022529737327 (1790-1805) Personaalaamat III (Parsi, Viira, Peri, Kähri, Tännassilma, Karilatsi, Tõdu, Kioma, Varbuse, Mooste, Kauksi)
- 202252973745 (1800-1817) Personaalaamat VI (Peri, Kähri, Tännassilma, Karilatsi, Tõdu, Kioma, Varbuse, Mooste, Kauksi)
- 202252973749 (1817-1831) Personaalaamat IX (Aleksandri, Peri, Kähri, Tännassilma, Karilatsi, Tõdu, Kioma, Varbuse, Mooste, Kauksi)
- 202252973755 (1832-1840) Personaalaamat XII (Peri, Saarijarve, Kähri, Tännassilma, Tõdu, Kioma, Varbuse, Mooste, Kauksi, saksa kihikond)
- 202252973765 (1841-1850) Personaalaamat XIV (Peri, Saarijarve, Kähri, Tännassilma, Karilatsi, Tõdu, Kioma, Varbuse, Mooste, Kauksi)
- 202252973772 (1851-1860) Personaalaamat XIX (Peri, Saarijarve, Tännassilma, Karilatsi, Tõdu, Kioma, Varbuse, Mooste, Kauksi)
- 202252973779 (1861-1870) Personaalaamat XXII (Peri, Tännassilma, Karilatsi, Tõdu, Kioma, Varbuse, Mooste, Kauksi)
- 202252973782 (1871-1890) Personaalaamat XXVI (Peri, Tännassilma, Karilatsi, Tõdu, Kioma)
- 202252973787 (1881-1890) Personaalaamat XXVIII (Peri, Kähri, Tännassilma, Karilatsi, Tõdu, Kioma)

- Query and visual interface to discover archival resources

QVIZ, Query and context based visualization of time-spatial cultural dynamics




Major Outcomes/Results

The screenshot displays the Qviz application interface. At the top, the browser address bar shows the URL: "Projekt zum Grabgewölbe Heydekens; EAA.3828.1.212; 1780". The main content area features a historical document with handwritten text and architectural drawings. A dialog box titled "Create QVIZ Social Bookmark" is open in the foreground, containing the following fields:

- Identifier:** 20000340091
- Title:** Projekt zum Grabgewölbe Heydekens
- Timespan:** 1780 -
- Language:** DE
- Level:** AHV
- Reference:** EAA.3828.1.212
- Bookmark title:** (empty text input field)
- Bookmark description:** (empty text input field with a "what is this?" link)
- Bookmark keywords:** (empty text input field with a "list keywords" link)
- Add bookmark to Community of Practice:** (dropdown menu)
- Create** (button)



Major Outcomes/Results



- Navigation
 - Main Page
 - Recent Changes
 - Help
- CoPs
 - CoP A
 - CoP B
 - CoP C
- Collections
 - [-] folder1
 - [-] folder2
 - [-] label1.1
 - [-] label1.2
 - [-] label2.1
 - [-] label2.2
 - [-] label2.3
- Tools
- History
 - User_Manual_for_Prototype_...
 - CommunityPage
 - FrontPage

Search

Simple Search
Archive Portal: NAE
Archive Portal: SVAR
Context Visualisation
Query Visualisation Tool

To be implemented...

Collection Listing

Content

Article
Edit
Metadata
Annotate
History
Socialize
Visualize: Context

User Manual for Prototype 1

Types: rdfo:Resource

User Manual for the Social Knowledge Building Component, Prototype 1

Introduction

Currently, most features are available to anonymous users. Please see the User Login section for creating an account and logging in.

This tool is not for users who are new to the collaborative content environments. It is advised to try Wikis and also any content management environment that includes a WYSIWYG content editor (What You See Is What You Get).

What is content? The basic unit of content is the article or other form of uploaded media (an image). An article is created in the WYSIWYG editor within the **edit** tab of the content portlet. It is up to the user to link to other articles. In the future, users might also organise links in hierarchical collections. Better linking support and bookmarking (of local articles and archive portal content) is planned for the future. You may make the links directly to external resources (enclosed a URL within single brackets)

Terminology

Article - a basic unit of content that uses can create; a web page created using a WYSIWYG content editor. Possibly the content is pasted from other sources, such as a MS Word document, etc.

Article	a basic unit of content that uses can create; a web page created using a WYSIWYG content editor. Possibly the content is pasted from other sources, such as a MS Word document, etc.
Link type	This explains how two articles are related. It depends on defaults available to articles but also the page types of the two articles.
Page type	The page can be assigned one or more types from the ontology.
portlet	a presentation unit or unit that contains activities within the user interface such the content, collections navigation references portlets
Wiki syntax	See Wiki syntax help at http://en.wikipedia.org/wiki/How_to_edit_a_page or http://en.wikipedia.org/wiki/Wikipedia:How_to_edit_a_page
Wiki open editing or Wiki link to local content	A link is enclosed in double brackets <code>my article title</code> . When the article does not exist, the link is "red" and by clicking on the link, the user can create a new article with that title enclosed within the Wiki link. To use a different label within the text for an article: <code> label or words to display and link in the current page .</code> See Wiki syntax help at http://en.wikipedia.org/wiki/How_to_edit_a_page or http://en.wikipedia.org/wiki/Wikipedia:How_to_edit_a_page . A subset of wiki syntax is supported because we are more interested in using a WYSIWYG editor, for example, one can create and fill tables easily without bothering with Wiki syntax for creating tables.
Wiki link to external content	Enclose a URL within a single bracket " href=" http://en.wikipedia.org/wiki/How_to_edit_a_page "> http://en.wikipedia.org/wiki/How_to_edit_a_page

Ontology Management

References

outgoing

[-] untyped (4)

[-] ikewiki:hasAuthor (2)

[-] rdf:type (1)

incoming

[-] untyped (2)



Conclusion and actors in QVIZ

- Target groups:
 - Family history researchers and local historians
 - Students
 - Educators
 - Professionals/Authorities
- Conditions for archival institution.
 - Provide an index of archival references connecting to administrative unit
 - Provide administrative ontology content
 - Provide services for social bookmarking of archival resources
 - Integrate QVIZ social bookmarking toolkit within their webportal



Other solutions for Cross-institutional Access to archival documents

- **Finding aids:** Cross-institutional search over EAD, finding aids. Such as the Online Archive of California (OAC) which is part of California Digital Library.
- **Family History Library Catalog** , provided by The Church of Jesus Christ of Latter-day Saints. This catalogue have both place names search of references to archival document across the world.
- **Footnote:** is a centralized subscription-based website that features searchable, original documents that provide users a view of the events, places and people that shaped the American nation and the world.



More information at...

www.qviz.eu